

City of Los Angeles Department of water and power

Item No.	Qty / UOM	Description	UNIT PRICE	Extension
1	1,000 EACH	<p>NAICS: 335932 Matl Code: 2759153 EA STEP, CLIMBING, FOR THIN WALL HOLLOW POLES. .685-INCH DIAMETER, A36 STEEL THERMAL DIFFUSION GALVANIZED PER ASTM A1059 AND ARMORGALV AG 3000. SHALL BE UNC THREADED ON STEP PER DRAWING OB403-42 WITH 87.5 DEGREE HOOK ON THE POLE STEP END, ALLOWABLE LENGTH VARIATION SHALL BE +/- 0.250 INCH. SHALL BE EQUIPPED WITH ONE WASHER NUT WELDED ON THE STEP END, THE OTHER END SHALL BE EQUIPPED WITH ONE CURVED WASHER CONSTRUCTED TO PREVENT ROLLING IN ACCORDANCE WITH THE DRAWING, WITH MANUFACTURERS LOGO OR NAME, ONE WASHER NUT WELDED, AND ONE SYNTHETIC RUBBER WASHER.</p> <p>THE POLE STEP SHALL BE ABLE TO WITHSTAND 600-POUND STATIC LOAD AT THE END WITHOUT ANY PLASTIC DEFORMATION, THE TEST SHALL BE WITNESSED BY LADWP PERSONNEL. IF THE TESTING IS DONE BY AN INDEPENDENT LABORATORY WITHOUT THE PRESENCE OF A LADWP PERSONNEL, A CERTIFIED TEST LAB RESULT MUST BE SUBMITTED.</p> <p>"KORTICK MANUFACTURING CO." PART # K4252WING</p>		

Date Prepared
08/06/2015

Date Created
08/06/2015

Date Issued
08/06/2015

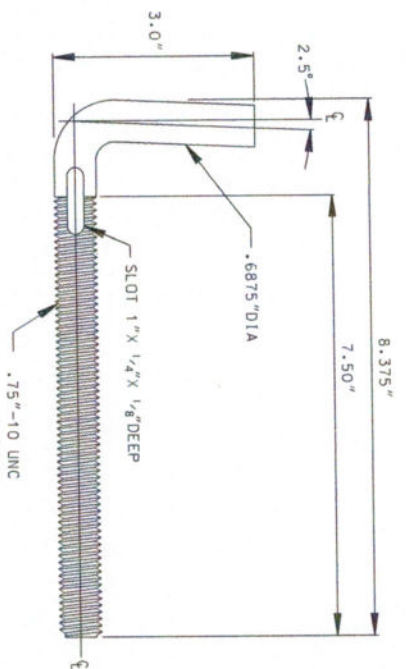
DELIVERY DAYS

DELIVERY IS DESIRED WITHIN 30 CALENDAR DAYS BUT SHALL NOT EXCEED 45 CALENDAR DAYS FROM RECEIPT OF ORDER.

BIDS OFFERING DELIVERY BEYOND THE MAXIMUM NUMBER OF DAYS WILL BE REJECTED AS NON-RESPONSIVE.

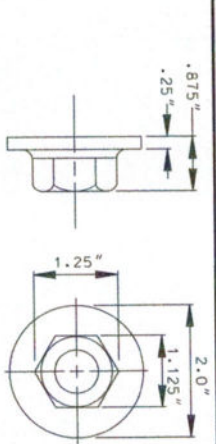
BTRC

MATERIAL LIST	
ITEM	DESCRIPTION
1	POLE STEP 10.75" LG X .6875" DIA ROUND BAR STOCK GALV. STEEL
2	POLE FACE PLATE, LOW CARBON STEEL PER ASTM A36 OR A307
3	WELDED HEX FLANGE NUT O.75" -10UNC X 1.125" WD. HEX NUT
4	WELDED END WELDED HEX FLANGE JAM NUT O.75" -10UNC X 1.25" WD. HEX FLANGE NUT WELDED TO 3.0" X .25" WASHER
5	O-RING, SYNTHETIC .8125" O.D. X .625" I.D. X .0937" WALL

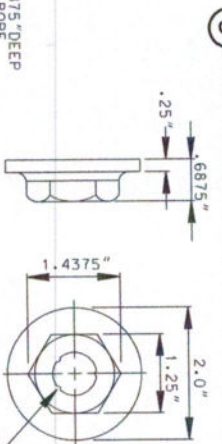


1 POLE STEP

2.0" DIA X .1875" DEEP COUNTERSUNK BORE

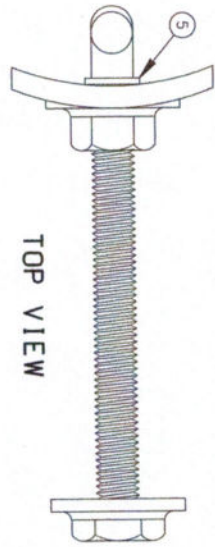


3 FACE PLATE WELDED HEX FLANGE NUT

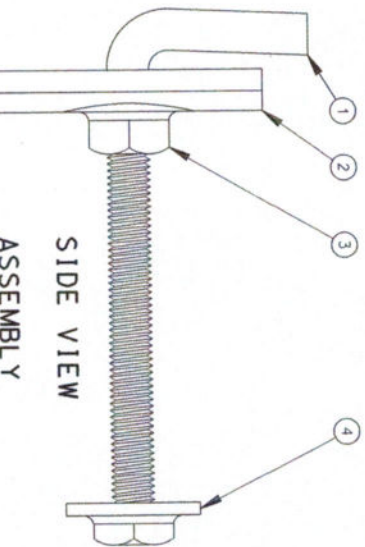


4 POLE STEP END WELDED HEX FLANGE JAM NUT

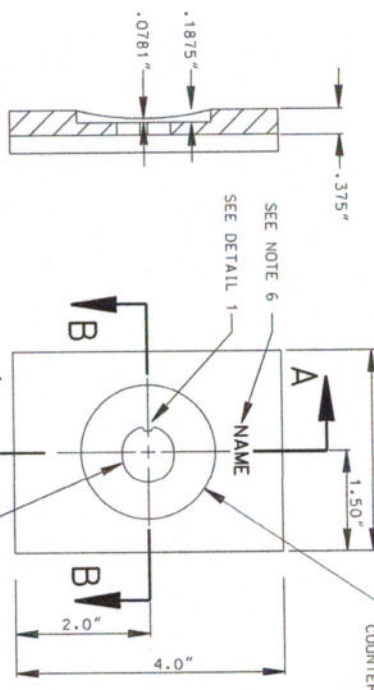
SEE DETAIL 2



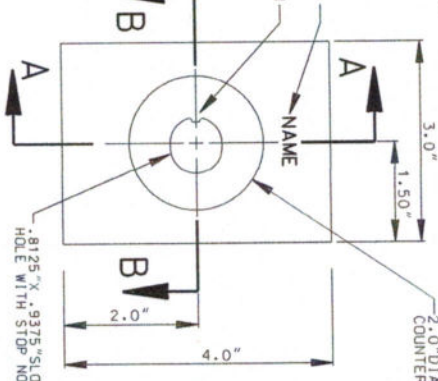
TOP VIEW



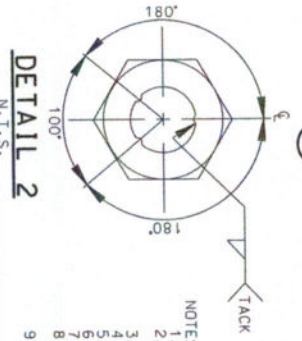
SIDE VIEW ASSEMBLY



SECTION A-A



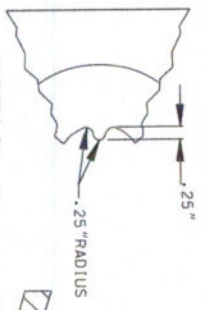
2 POLE FACE PLATE



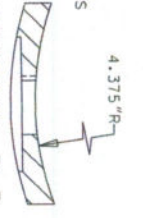
DETAIL 2

- NOTES:
1. MATERIAL: STEEL, LOW CARBON PER SPECIFICATION ASTM A36 OR A307.
 2. FINISH: ALL PARTS SHALL BE THERMAL DEFUSION GALVANIZED PER ARMORCAL V AG3000 AND ASTM A1059.
 3. DIMENSIONAL TOLERANCE: +/- .005" (IN ROD LENGTH ONLY).
 4. ALLOWABLE DIMENSIONAL COMPLIANCE SHALL BE IMPRESSED ON PARTS.
 5. ALL WELDERS SHALL BE LICENSED AND DATE SHALL BE IMPRESSED ON PARTS.
 6. ITEM 3 SHALL BE ROLLED TO AN INSIDE RADIUS OF 4.375" LENGTH WISE.
 7. ITEM 4 SHALL BE TACK WELDED AT THE OUTSIDE FACE OF THE HEX HEAD NUT ONE THREAD IN SO IT COULD BE UTILIZED AS A STOP ON THE POLE STEP (ITEM 1).
 8. ITEM 4 MUST BE PERMANENTLY AFFIXED ON TO ITEM 1.
 9. ITEM 5 SHALL BE IN PLACE TO KEEP ITEM 2 WITH THE STEP ASSEMBLY.

M.C. 27-59-153



DETAIL 1



SECTION B-B

REV.	REV. DATE	REV. BY	DESCRIPTION	APPV.	TITLE

CITY OF LOS ANGELES
DEPARTMENT OF WATER AND POWER
DISTRIBUTION ENGINEERING & SERVICES SECTION

DESIGN: J. GARCIA
CHECKER: R. SANCHEZ
DATE: 06/22/15

PROJECT: POLE STEP CLIMBING F/HOLLOW THIN WALL POLE APPLICATION

DRAWING NO.: 08403-42
SHEET 1 OF 1